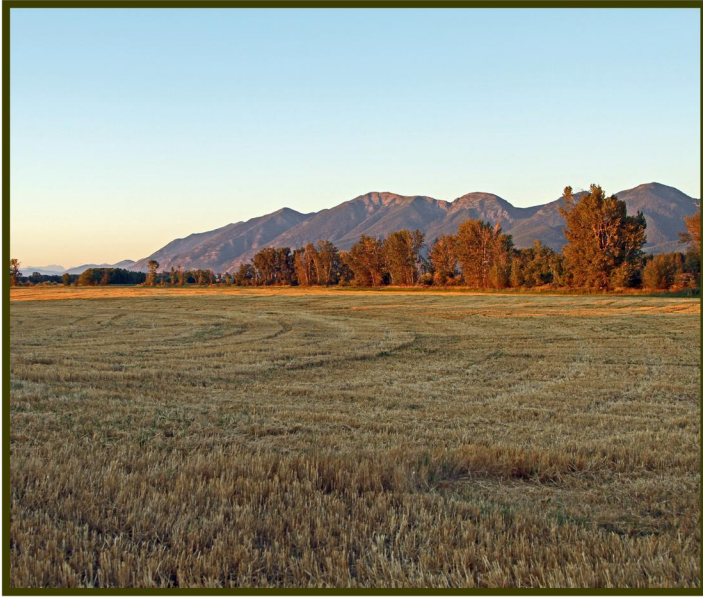


CONSERVING WORKS OF NATURE IS THE WORK OF FLATHEAD LAND TRUST

Here's a summary of what we've been working on in 2011, thanks to your membership contributions!
Please help support conservation of these special places in your community by renewing today, signing up online for monthly giving, or making a one time year end gift.



DIAMOND B FARM

This is a key project in FLT's efforts to maintain our local farming heritage on Flathead River. We're partnering with the landowners, USDA's Farm and Ranch Lands Protection Program and others to permanently conserve this 192 acre farm, 1.5 miles of river border and to complete streamside rehabilitation on the property.



About 130 of FLT's members and landowners gathered at the Diamond B for our 2011 Member Meeting in September. Members were able to experience this amazing setting first hand and meet local families who have protected their lands along lower Flathead River.

A HAVEN FOR WILDLIFE

A priority for FLT and our members is to increase the impact of conservation by focusing on projects adjacent to existing protected lands. The completion of this project, situated next to another FLT easement, will protect wildlife habitat and outstanding scenic views.



**MORE OF YOUR FLATHEAD LAND TRUST
MEMBERSHIP DOLLARS AT WORK**



LITTLE BITTERROOT BEAUTY

This spectacular ridge sits high above Little Bitterroot Lake and is the site of one of our easement projects with a private landowner. Upon completion, the donated easement will protect natural forestland and forever provide habitat for a range of native plants and wildlife.



In 2011, members got the chance to see the Little Bitterroot project in person—it was the destination for a member snowshoe outing in January. Sign up to receive invitations to upcoming events and experience your membership dollars at work. Email us flt@bigsky.net.



ADDING ACRES TO SMITH LAKE WPA

Much of FLT's time in 2011 has been devoted to seeing this project become a reality. Using federal wetlands grant funding, FLT and a private party plan to purchase 300+ acres. Over 100 acres will remain in private agricultural production, and 195 wetland acres will go to U.S. Fish & Wildlife Service to expand the Smith Lake Waterfowl Production Area.

CERTIFIED AMERICAN TREE FARM

The landowner donating this conservation easement is passionate about maintaining and restoring forest health and providing natural habitat for wildlife. It also borders the Smith Lake WPA.

